



# WELCOME GUIDE



THE JOHN PAUL II  
CATHOLIC  
UNIVERSITY  
OF LUBLIN | **KUL** 1918

WELCOME TO KUL!

WHY KUL?

FACTS & FIGURES

FACULTIES

OFFICES & CONTACTS

SECRETARIAT  
OF THE FACULTY

ACADEMIC CALENDAR

POLISH GRADING SYSTEM

CAMPUSES AND UNIVERSITY  
BUILDINGS

SCHOLARSHIPS & SOCIAL  
SUPPORT

GUARDIAN ANGEL (BUDDY  
STUDENTS)

STUDENT RIGHTS AND  
RESPONSIBILITIES

ERASMUS+: STUDENT MOBILITY  
FOR STUDIES AND TRAINEESHIPS

PRACTICAL INFORMATION

LEGALIZATION OF STAY IN  
POLAND

ARRIVAL IN LUBLIN

CITY OF LUBLIN

CITY SIGHTS

AFTER HOURS IN LUBLIN

SPORT  
ACTIVITIES

USEFUL POLISH WORDS &  
PHRASES

Projekt "Wsparcie potencjału KUL w zakresie obsługi studentów i kadry zagranicznej"  
jest współfinansowany ze środków Europejskiego Funduszu Społecznego  
w ramach Programu Operacyjnego Wiedza Edukacja Rozwój.

# WELCOME TO KUL!

## Dear students,

Welcome to KUL, welcome to Lublin, welcome to our friendly academic community!

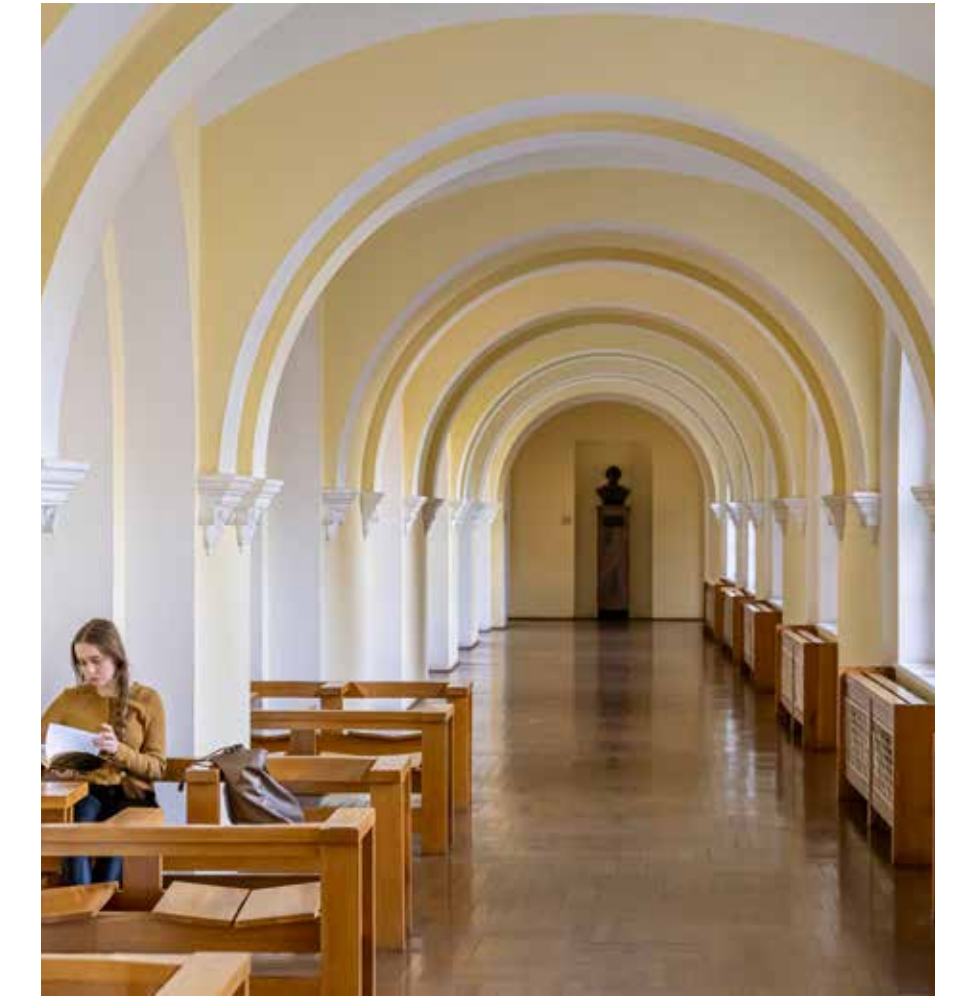
I am very glad that you have chosen our university for your education, spending your student life and private time.

We are the most recognizable and the oldest university in Poland. I am sure you will gain in-depth knowledge and preparation for adult life in various dimensions. Our university offers many possibilities of personal, cultural, spiritual

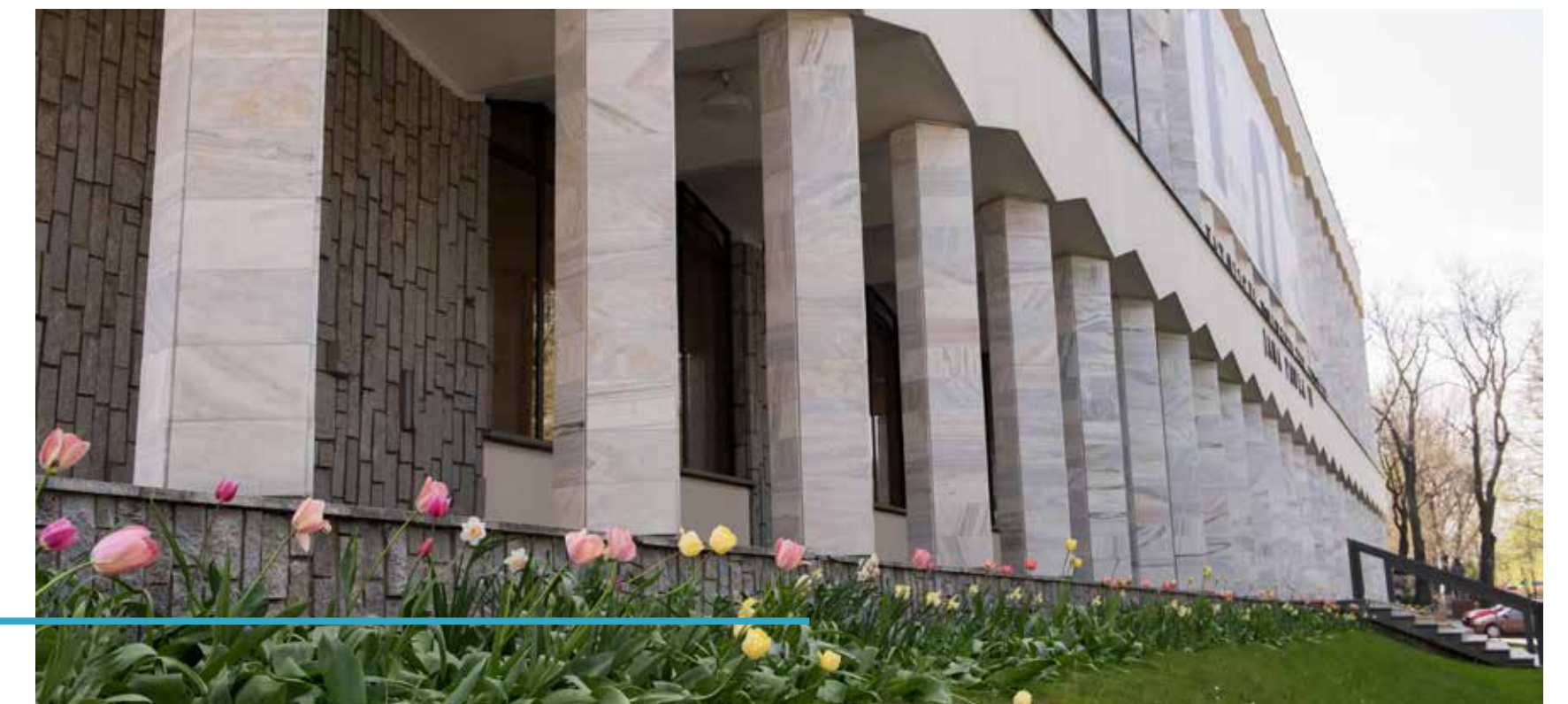
development as well as necessary financial, social support and inclusion in multi-layered activities.

Our goal is to engage you in the education process and to actively support the integration with the academic community of the John Paul II Catholic University of Lublin as much as possible.

I wish you a great and fruitful time at our university!



**Dr. Habil. Beata Piskorska, Prof. KUL**  
Vice-Rector for Students,  
Doctoral Students and Development





# WHY KUL?

## A UNIQUE UNIVERSITY

The John Paul II Catholic University of Lublin (KUL) is one of the oldest Polish universities. Founded in 1918, it is among the first achievements of Poles after regaining independence, as well as the first Polish university to reopen after the Second World War. In communist times, it was called an island of freedom and an oasis of free thought. Today, being the oldest Catholic university in East-Central Europe, it integrates over a hundred years of tradition and state-of-the-art research.

## OUR PROFESSOR – OUR POPE

For twenty four years, Rev. Karol Wojtyła, later to be elected Pope John Paul II, was a professor of the Faculty of Philosophy at the Catholic University of Lublin. When at the Holy See, he maintained strong connections with the Alma Mater. The Pope initiated *The John Paul II Foundation*, which enables young talented people from the countries of the former communist bloc to study at KUL. Karol Wojtyła's vast heritage is subject to extensive research, disseminated in numerous publications, lectures and conferences. Since 2005, the university bears the name of John Paul II.

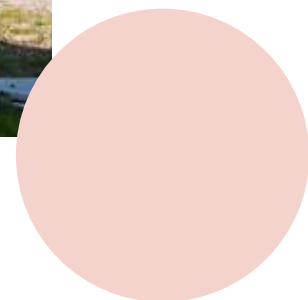
## COMMUNITY OF STUDENTS AND PROFESSORS

The John Paul II Catholic University of Lublin is built on Catholic values, but stays open to all, regardless of their background or religion. Students appreciate an opportunity granted them by the University not only to obtain a diploma from one of the most renowned universities in Poland, but also to be a member of an exceptional academic community. All academic courses allow the students to acquire advanced knowledge in a strong student-tutor relationship. This is confirmed by the national rankings, which evaluate highly the quality of the scientific staff of KUL.



## HUMAN PERSON AT THE FOCUS OF SCIENTIFIC INQUIRY

KUL promotes comprehensive research, which includes not only its well-established fields of theology and philosophy, but also humanities, legal, social, natural and engineering sciences. Thanks to the significant advancement of didactic infrastructure, health sciences and medicine have recently been included on the list of education and research areas, which is justified by high demand for health specialists and researchers. Thus, all aspects concerning the contemporary human being are included in the research and didactic curricula, permeated by the spirit of personalism – the legacy of John Paul II.



# WHY KUL?

## STUDYING IN THE WORLD OF VALUES

The university, thanks to the high quality of its research and didactics rooted in the world of values, offers its students many opportunities for professional and personal development. KUL offers a wide range of first (BA) and second cycle (MA) courses, long-cycle studies, and KUL Doctoral School. The University supports students by offering dormitories, scholarships, sporting facilities, assistance for people with disabilities and support in entering the labour market. Asked about the unique experience of studying at KUL, university students highlight the exceptional atmosphere of the academic community and the lasting friendships they make.

## EXCEPTIONAL GRADUATES

The University is proud of its more than 120,000 graduates, many of whom became significant personages on the Polish and global social, cultural, political and economic arena. Many of them occupy prominent positions, play important social roles, are business leaders and take part in shaping contemporary culture. The majority of University graduates strongly identify themselves with their Alma Mater. Among the exceptional graduates of KUL one can count Rev. Prof. Michał Heller, a philosopher and cosmologist, the first Polish winner of The Templeton Prize, or Wiesław Myśliwski, one of the most famous contemporary Polish writers.

## CULTURAL KUL

KUL's cultural life is thriving. There are dozens of research, artistic and sports organizations at the university, including student research circles, theatres, choirs and discussion clubs. They provide many opportunities for students to develop their passions and talents. For decades now KUL has taken pride in its Academic Choir, the Plastic Scene (Scena Plastyczna KUL), while the Student Theatre ITP is gaining more and more popularity and recognition. The John Paul II Catholic University of Lublin Museum organizes both guest exhibitions and displays showing the university's rich art collections, dating back to 1932.





# FACTS & FIGURES

- Established in 1918 as the first university in Lublin and the fourth in Poland
- The oldest Catholic university in East-Central Europe
- 6 faculties in Lublin, a branch in Stalowa Wola and KUL Doctoral School located in 3 University campuses
- Over 50 degree programmes in the first, second and long cycle in Polish and English
- Nearly 10 thousand students and doctoral students
- Nearly 1000 foreign students from over 50 countries
- Over 1000 academic staff, including 300 professors
- Over 120 000 graduates, active in social, political and economic life
- Over 200 foreign partner universities and membership in international organizations
- Annual Adaptation Week to help new students adapt to the daily functioning of the University and its culture
- Over 80 student research circles and other organizations supporting student scientific and cultural life
- Active Student Chaplaincy KUL (DA) that enables spiritual growth through its several groups and communities, also offering psychological support
- State-of-the-art sporting facilities with many sports sections in the Centre for Sports and Activities
- Comfortable dormitories and career counselling available for Polish and foreign students
- Over 2.3 million volumes in the University Library, with almost 100 000 old prints, manuscripts and other unique library items, a large part of which qualifies as National Library Collection, along with over 50 000 items in the Digital Library
- 300-year-old spectacular Main Building and unique Academic Church, dating back to the 15th century
- A safe space for scientific and personal development

# FACULTIES

At KUL, there are 6 faculties organized into institutes and departments with over 50 degree programmes:



- Faculty of Theology
- Faculty of Law, Canon Law and Administration
- Faculty of Philosophy

- Faculty of Humanities
- Faculty of Social Sciences
- Faculty of Natural Sciences and Health

**as well as a branch of KUL located in Stalowa Wola.**



# OFFICES & CONTACTS

## ADMISSIONS OFFICE

is a subsection of the Department of Education at the John Paul II Catholic University of Lublin tasked with helping Polish and international candidates with the admission procedure in order to achieve the best university experience possible. They offer extensive support to international candidates in four languages: Polish, English, Russian and Ukrainian.

### Information for International Candidates:

<https://kandydat.kul.pl/en/vademecum-rekrutacji/>

- University educational offer (all programmes taught in Polish and English)
- Programmes taught in English
- Step-by-step guide: instruction about online registration

### DOCUMENTS:

- required for online registration
- required upon enrolment (confirmation procedure for the qualified candidates)
- Legalization and recognition of your educational documents
- English proficiency verification
- Tuition fee payments
- Scholarships
- Requests and declarations forms

## ADMISSIONS OFFICE

### COLLEGIUM NORWIDIANUM BUILDING, ROOM CN-004

Al. Raławickie 14, 20-950 Lublin  
study@kul.pl

(+48) 81 445 42 16 (for English-speaking candidates)

(+48) 81 445 42 62 (for Russian and Ukrainian-speaking candidates)

[https://www.kul.pl/admissions-office-kul,art\\_58087.html](https://www.kul.pl/admissions-office-kul,art_58087.html)

**UNIVERSITY STUDENT COUNCIL (USS)** is formed by all students. The representatives of USS are members of the Senate of KUL; they co-create the program of study or financial aid for students and distribute funds for the activities of student organizations. Particularly worth mentioning is the institution of the Student Ombudsman, who defends and protects the students' rights and interests within the University.

### COLLEGIUM NORWIDIANUM BUILDING, ROOM CN-231

Al. Raławickie 14, 20-950 Lublin  
uss@kul.pl  
(+48) 81 445-43-64

**STUDENT CHAPLAINCY KUL (DA)** creates an atmosphere for the development through sacramental life, formation meetings in individual groups, joint pilgrimages and trips, but also just spending time with each other and conversations.

I. Radziszewskiego 7, 20 – 039 Lublin  
dakul@kul.pl  
(+48) 797 907 780  
<https://da.kul.pl/>

# OFFICES & CONTACTS

## **KUL CAN CENTRE FOR INCLUSION OF STUDENTS WITH SPECIAL NEEDS**

supports students with various special needs, provides them with information about grants and sources of financial support and helps them access university social and academic activities. The acronym KUL CAN comes from the Polish name of the centre. It has also given rise to their slogan and motto: **KUL CAN = YOU CAN.**

**OPENING HOURS:** Monday – Friday 10:00 13:00

**KNOWLEDGE TRANSFER CENTRE BUILDING,  
ROOM CTW-43** (accessible entry next to the university chapel)

Al. Raławickie 14, 20-950 Lublin

bpsn@kul.pl

(+48) 81 445 3203

<https://www.kul.pl/disabled-students-office,2476.html>

<https://www.facebook.com/KULCAOzN/>



**KUL MEDICAL CENTRE** is located in the John Paul II Collegium building (C – entrance next to the entry). You can get there help from a family doctor, dentist, psychologist, as well as do basic examinations (EKG, laboratory tests) and receive necessary medical certificates. You can get detailed information and assistance at the registration desk.

Al. Raławickie 14, 20-950 Lublin

(+48) 81 445 33 97

(+48) 81 743 65 87

nzoz-kul@kul.pl



# SECRETARIAT OF THE FACULTY



## Contacts to staff members of Faculty Secretariats in charge of degree programmes in English:

The Faculty Secretariat is the place where you will get information about the course of study, the schedule of classes, rights and obligations of a student, receive an ID card and a certificate of student status or submit official requests to the Dean of the Faculty. Staff members at individual Faculty Secretariats are dedicated to students of a particular degree programme.

### LIST OF ALL SECRETARIATS & LINKS TO THEIR WEBSITES:

<https://kandydat.kul.pl/en/vademecum-rekrutacji/sekretariaty-wydzialow-kontakt/>

#### APPLIED ANTHROPOLOGY

– Secretariat of the Faculty of Philosophy: room GG-251 (Main Building), (+48) 81 445 42 51

**BIOTECHNOLOGY** – Secretariat of the Faculty of Natural Sciences and Health: room WMP-315 (Campus Poczekajka, Konstantynów 1H), (+48) 81 445 45 51

**EUROPEAN STUDIES** – Secretariat of the Faculty of Law, Canon Law and Administration: room C-727 (John Paul II Collegium), (+48) 81 445 37 27

#### EUROPEAN UNION LAW –

Secretariat of the Faculty of Law, Canon Law and Administration: room C-727 (John Paul II Collegium), (+48) 81 445 37 27

**INFORMATICS** – Secretariat of the Faculty of Natural Sciences and Health: room WMP-315 (Campus Poczekajka, Konstantynów 1H), (+48) 81 445 45 51

**JOURNALISM AND SOCIAL COMMUNICATION** – Secretariat of the Faculty of Social Sciences: room C-542 to C-547 (John Paul II Collegium), (+48) 81 445 35 21

**PHILOSOPHY** – Secretariat of the Faculty of Philosophy: room GG-251 (Main Building), (+48) 81 445 42 51

**INTERNATIONAL RELATIONS OFFICE (IRO)** coordinates the international mobility of students and staff under scholarship and exchange programmes (e.g. Erasmus+, NAWA, CEEPUS) as well as bilateral cooperation.

**INTERNATIONAL STUDENT SUPPORT CENTRE (ISSC)** is an information point for foreign students who start their studies at KUL. It functions within the structure of IRO. Its staff assists new international students of KUL in handling various official matters that can be troublesome for foreigners, e.g. legalization of residence. It also actively cooperates with the academic community in integrating students and adapting them to the new environment.

#### THE MAIN BUILDING, ROOM GG-203

The John Paul II Catholic University of Lublin

Al. Racławickie 14, 20-950 Lublin  
international@kul.pl

(+48) 81 445 41 41

(+48) 81 445 42 04

(+48) 81 445 41 81

(+48) 81 445 41 05

<https://www.kul.pl/international-relations-office,271.html>

<https://www.kul.pl/ISSC>

# ACADEMIC CALENDAR

The academic year consists of two semesters: winter semester (October to the end of January) and summer semester (February to mid-June). There are several holiday breaks: Christmas break in December, a break between winter and summer semester in February and a spring break that falls at the time of Easter (March/April).

## I SEMESTER

Dates of semester: 1 October 2022 – 30 January 2023

Exams: 31 January 2023 – 13 February 2023

Resits: 14 February 2023 – 20 February 2023

## HOLIDAYS (NO CLASSES):

31 October – 02 November 2022 (All Saints' Day, All Souls' Day)

11 November 2022 (National Independence Day in Poland)

24 December 2022 – 02 January 2023 (Christmas Break)

06 January 2023 (Epiphany)

## II SEMESTER

Dates of semester: 21 February 2023 – 20 June 2023

Exams: 21 June 2023 – 05 July 2023

Resits: 06 July 2023 – 12 July 2023

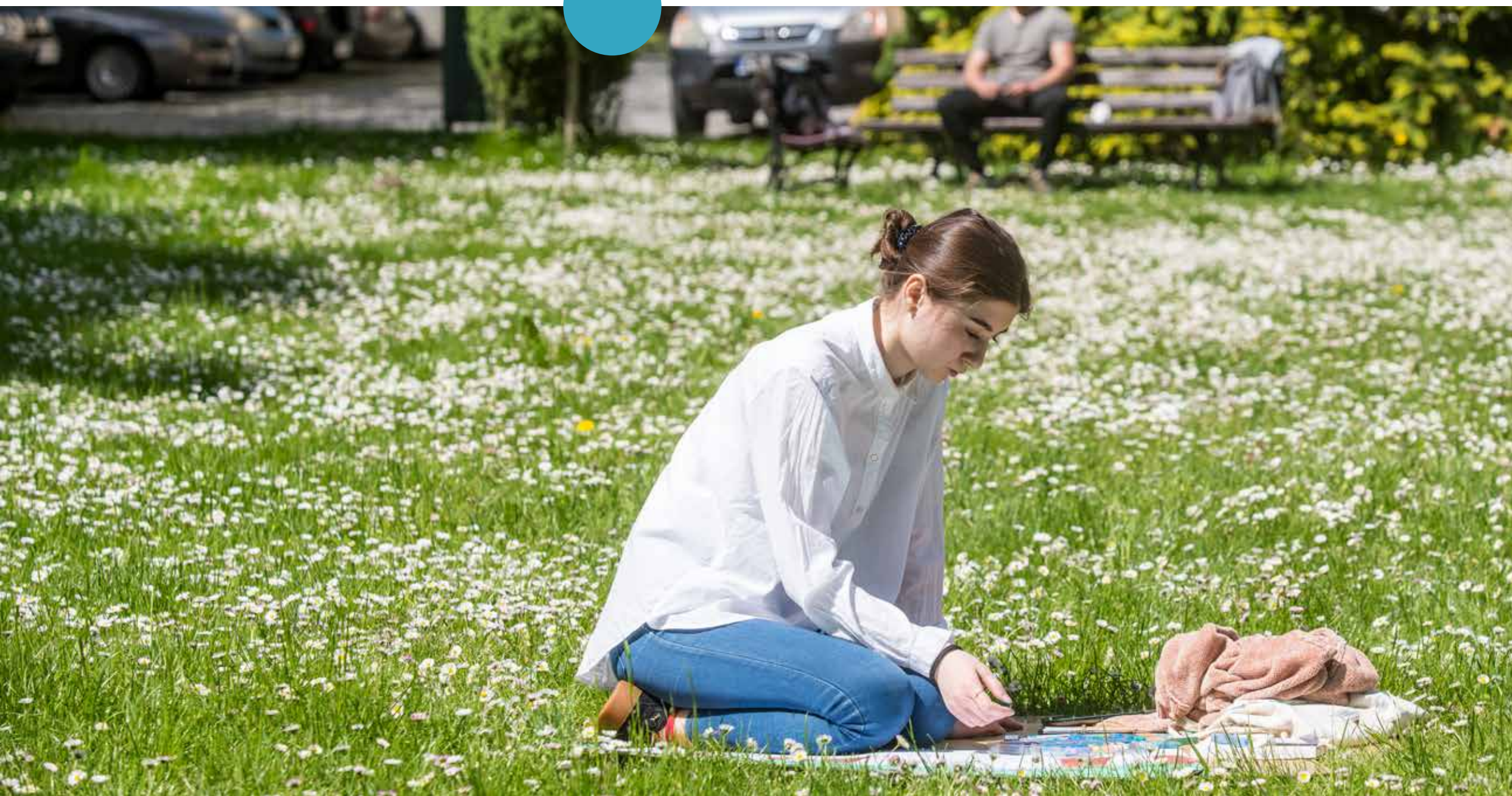
## HOLIDAYS (NO CLASSES):

05-11 April 2023 (Easter Break)

01-03 May 2023

08-09 June 2023 (Corpus Christi)

16 June 2023 (KUL Patronal Feast)



# POLISH GRADING SYSTEM

The semestral system requires 15 weeks of classes followed by a two or three-week examination period. There are two ordinary examination periods per academic year. The first is held in the end of January and the first half of February. The second is held in the second half of June. There are three forms of assessment: E – Exam, Z – Credit with grade, Zbo – Credit without grade, (Pass/Fail). Students who do not pass their exams during the first exam session may retake them during the make-up exam session (mid-February and July). It applies to courses that end with exam (E) and to language courses / lectures / tutorials that end with Credit with grade (Z). Each student has to attend classes regularly and comply with the teacher's requirements in order to pass a given course



## LOCAL GRADE

5  
4+  
4  
3+  
3  
2

## ECTS GRADE

A  
B  
C  
D  
E  
FX/F

## LOCAL DEFINITION

very good  
better than good  
good  
better than satisfactory  
satisfactory  
unsatisfactory (fail)

# CAMPUSES AND UNIVERSITY BUILDINGS

MAIN CAMPUS AT AL. RACŁAWICKIE 14

**KNOWLEDGE TRANSFER  
CENTER BUILDING (CTW)**

**COLLEGIUM OF  
JONH PAUL II (C)**

**COLLEGIUM  
NORVIDIANUM (CN)**



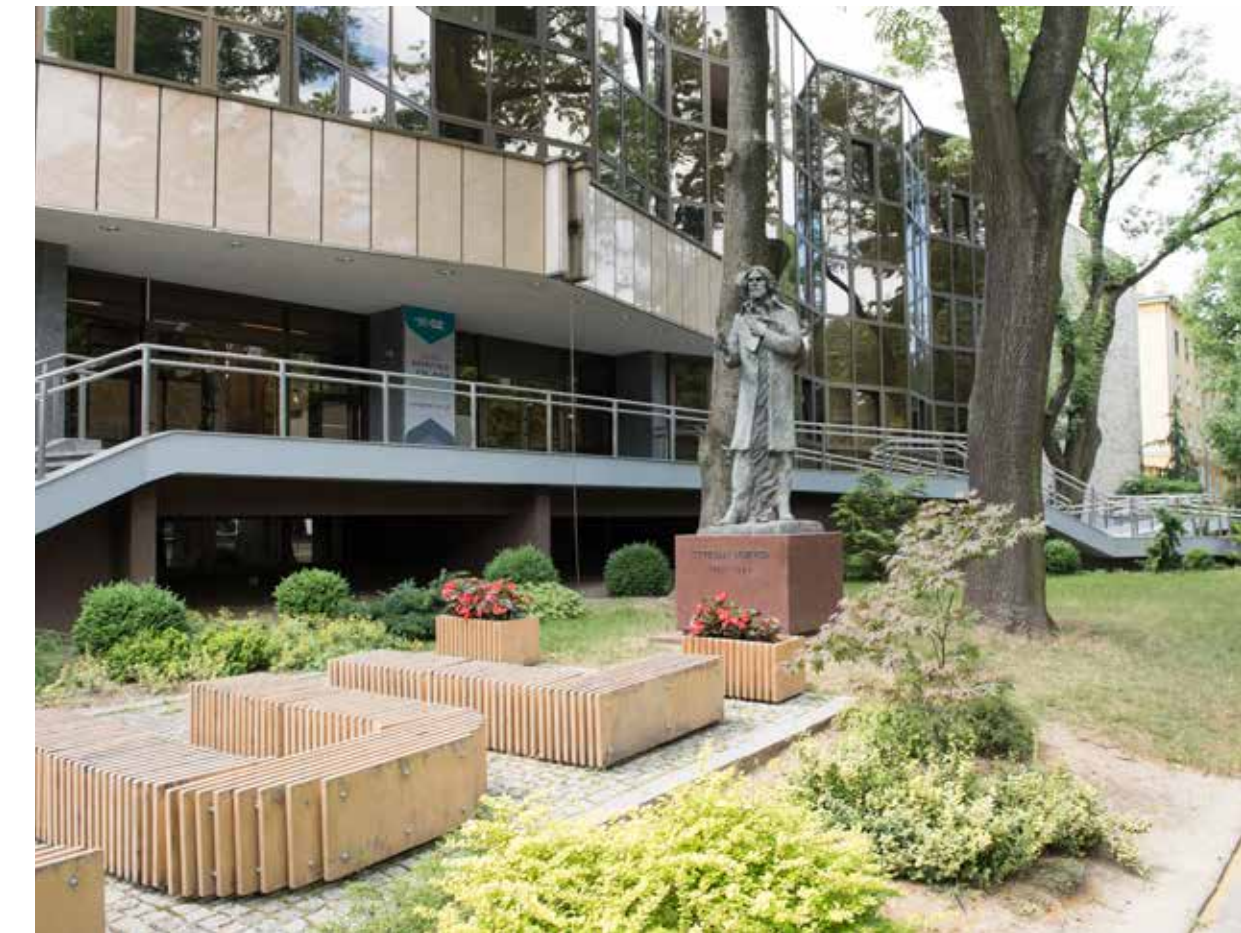
**ACADEMIC CHURCH**

**MAIN BUILDING (GG)**

## Abbreviations



**GG - MAIN BUILDING**  
(Al. Racławickie 14)



**CN - COLLEGIUM NORVIDIANUM**  
(Al. Racławickie 14)

# CAMPUSES AND UNIVERSITY BUILDINGS



**B, WMP – FACULTY OF NATURAL SCIENCES AND HEALTH (POCZEKAJKA CAMPUS AT KONSTANTYNÓW STREET)**



**C – COLLEGIUM OF JOHN PAUL II (Al. Raławickie 14)**



**CTW – KNOWLEDGE TRANSFER CENTRE BUILDING (Al. Raławickie 14)**



**CI – COLLEGIUM IURIDICUM (SPOKOJNA STREET)**



**HS – SPORT CENTRE – KONSTANTYNÓW STREET**



## CAMPUSES AND UNIVERSITY BUILDINGS

**THE INTERDEPARTMENTAL LIBRARY IN THE JOHN PAUL II COLLEGIUM** provides access to the book collections of the Faculty of Social Sciences and Faculty of Law, Canon Law and Administration.

### OPENING HOURS

Monday – Friday 8.00 – 18.00  
Saturday – 9.00 – 15.00

John Paul II Collegium,  
room C-103 (1st floor)  
Aleje Racławickie 14, 20-950 Lublin  
(+48) 81 445 33 86

**CHOPINA STREET 27**, 20-023 Lublin  
sekbibl@kul.lublin.pl  
(+48) 81 445 31 49,  
(+ 48) 786 935 530  
www.bu.kul.pl

**E-KUL PLATFORM** is an electronic university system for KUL students which provides information about your studies, including online courses. You can find classes schedule, change your Wi-Fi password, etc. there. Each KUL student has a student account on the e-kul platform.

### VIA THE PLATFORM YOU CAN:

- ➔ check your schedule
- ➔ sign up for elective classes
- ➔ configure access to the wireless network at KUL
- ➔ print a payment order, e.g. for a student ID card
- ➔ submit your diploma thesis in electronic form
- ➔ use MS Office
- ➔ access university library catalogues
- ➔ get access to the tools for online studies: **MS TEAMS** and **MOODLE KUL** (mKUL).
- ➔ pay for your room in KUL dormitory

## HOW TO CREATE YOUR E-KUL ACCOUNT:

1. Go to: <https://e.kul.pl/login.html>
2. Choose option **'ZAŁÓŻ KONTO'**
3. Fill out the registration form – choose English version
4. Section 'Personal data': Name (Only first name!), Surname – the same as in your passport. Please capitalize first letter only.
5. Date of birth: year-month-day (splitted with dash '-' sign)
6. Choose 'Foreign citizen' and provide your ID number (the same you used for registration – IC/passport number) – use only numbers without letters
7. Record number – check at: <https://rekrut.kul.lublin.pl/aktual.html>  
**TWÓJ NUMER ALBUMU TO: \_\_\_\_\_ <- - THIS IS YOUR NUMBER!**
8. E-mail address
9. Data for the account: username (preferable: *yournamesurname*) you can use 4-16 lowercase letters and numbers; password (consists of at least 8 characters – only lowercase letters and numbers).
10. Choose 'TAK' (consent for your data processing and confirmation of compliance with the Regulations of the Computer Network of KUL)
11. Create account
12. Finally log into your account – provide your username and password.

# FINANCIAL AID FOR STUDENTS FOR THE ACADEMIC YEAR 2022/2023

## PLACE OF SUBMITTING APPLICATIONS

### DEPARTMENT OF STUDENT SOCIAL SUPPORT

Collegium Norvidianum, rooms CN  
-001, 001A, 001B, 002A - according  
to the field of study (ground floor)  
John Paul II Catholic University of  
Lublin

Al. Raławickie 14, 20-950 Lublin  
[www.kul.pl/pomocmaterialna](http://www.kul.pl/pomocmaterialna)

### FORMS OF BENEFITS

- maintenance grant
  - scholarship for the disabled
  - Rector's scholarship for students
  - welfare payment
- as well as:**
- funded scholarships

Details, rules and conditions  
of awarding particular types of  
benefits can be found at:  
[www.kul.pl/pomocmaterialna](http://www.kul.pl/pomocmaterialna)

## APPLICATION DEADLINES

### → BY 15 SEPTEMBER

Students in their second year of  
studies and those admitted to  
studies by 31 August, applying for a  
maintenance grant or scholarship  
for the disabled

### → BY 30 SEPTEMBER

Students applying for the Rector's  
scholarship for students; students,  
enrolled after 31 August, applying  
for a maintenance grant or  
scholarship for the disabled.

### → BY 28 FEBRUARY

Students applying for the Rector's  
scholarship for students only in the  
fields of study where additional  
recruitment for the summer  
semester has taken place or is  
taking place.

### → FROM THE 1ST TO THE 5TH DAY OF EACH MONTH,

except for the period from July  
to October, students may apply  
for a maintenance grant and  
scholarship for the disabled.

## ELIGIBILITY CRITERIA

### PURSUANT TO § 4, PARAGRAPH 1 OF THE REGULATIONS ON BENEFITS OF THE JOHN PAULL II CATHOLIC UNIVERSITY OF LUBLIN, A MAINTENANCE GRANT MAY BE APPLIED FOR BY A FOREIGNER:

- (A)** who has been granted a permanent residence permit or is a long-term resident of the European Union;
- (B)** who has been granted a temporary residence permit in connection with the circumstances referred to in Article 159(1) or Article 186(1)(3) or (4) of the Act of 12 December 2013 on foreigners (i.e. Journal of Laws 2021, item 2354, as amended);
- (C)** who has refugee status granted in the Republic of Poland or enjoys temporary protection or subsidiary protection on the territory of the Republic of Poland;
- (D)** who holds a certificate proving his/her knowledge of the Polish language as a foreign language, referred to in Article 11a(2) of the Act on the Polish Language of 7 October 1999 (i.e. Journal of Laws of 2021, item 672), at least at the C1 language proficiency level;
- (E)** who is a holder of the Pole's

Card or a person who has been issued a decision on being confirmed as a person of Polish descent;

- (F)** who is a spouse, ascendant or descendant of a citizen of the Republic of Poland residing on the territory of the Republic of Poland;
- (G)** who has been granted a temporary residence permit in connection with the circumstances referred to in Article 151(1) or Article 151b(1) of the Act on Foreigners of 12 December 2013, or who resides on the territory of the Republic of Poland in connection with the short-term mobility for scientific research purposes under the conditions set out in Article 156b(1) of that Act, or who holds a national visa in order to conduct scientific research or development work.

Foreign students who have taken up studies in Poland from the

academic year 2019/2020 are entitled to apply for the remaining types of material aid benefits, i.e.: Rector's scholarship, scholarship for disabled persons and welfare payment.

Applications should be submitted in Polish. All documents enclosed with the application and evidence in the proceedings, including title pages of publications submitted for the Rector's scholarship application, should be translated into Polish. In case of doubts concerning the accuracy of the translation, the authority may request the party to present an opinion of a sworn translator.

Documents issued by administrative bodies or certificates from the organisers of scientific sessions on participation or presentation of papers should be translated by a certified translator, with the exception of the programme of the scientific session (conference) and the title page of a publication published in a foreign language, which may be translated by the applicant, making a relevant statement under the translation.

# SCHOLARSHIPS & SOCIAL SUPPORT

# GUARDIAN ANGEL (BUDDY STUDENTS)



Foreign KUL students have their Guardian Angels – KUL students assigned to help them solve any practical problems before arrival and during their stay in Lublin, as well as to integrate into the new environment. If you would like to meet and get help from your Guardian Angel, contact the International Relations Office: **international@kul.pl**, (+48) 81 445 42 04, <https://www.kul.pl/ISSC>.

As an international student, you may also become a Guardian Angel after completing the first semester of your studies at KUL – apply within the ongoing recruitment!

## WHAT DO YOU GAIN FROM BEING A GUARDIAN ANGEL OF AN INTERNATIONAL STUDENT?

- ➔ meeting new international friends
- ➔ participation in events and excursions organised for foreign students (free of charge)
- ➔ improvement of your foreign language skills
- ➔ opportunity to learn about other cultures
- ➔ your role will be taken into account when applying for a scholarship for study or traineeship under the Erasmus+ programme or as part of bilateral cooperation
- ➔ entry in the supplement to your diploma
- ➔ certificate of participation in the Guardian Angel programme

Application form and programme regulations: <https://www.kul.pl/ISSC>

If you have any questions concerning application, contact us by email: **international@kul.pl** or **incoming@kul.pl**

## ADAPTATION WEEK

Adaptation Week for the first-year students is organised in the first week of October, right after the start of each academic year. Information meetings and workshops introduce students to academic rules and regulations, but also help them settle in and learn more about our university. Some events are addressed to all first-year students, while others are for students of a particular degree programme only. First-year students participating in Adaptation Week are exempt from attending classes at this time.

The detailed programme of Adaptation Week in each academic year: <https://www.kul.pl/ISSC> (tab: Events)



# STUDENT RIGHTS AND RESPONSIBILITIES

## SCHOOL OF POLISH LANGUAGE AND CULTURE

[link do przetłumaczonego, aktualnego regulaminu studiów KUL]

### **RIGHTS AND OBLIGATIONS OF STUDENTS:**

<https://e.kul.pl/moodle/course/view.php?id=6394>

The School of Polish Language and Culture at the John Paul II Catholic University of Lublin is one of the most experienced "Polish as a foreign language" language training establishments in Poland. It was established in 1974. The school runs intensive Polish language courses, which are divided into summer courses, year round programme as well as individual programmes. The content of each programme is tailor-made following an analysis of particular needs and preferences, backed up by the solid academic experience. The institution runs "orientation courses" – programmes that introduce Poland, with its language, history and culture to foreigners who are planning their professional carriers connected to Poland.

The School of Polish Language and Culture has been cooperating with many institutions, universities and foundations and is always open to establish new contacts. It enjoys a

good reputation - usually more than 200 hundred people take part in its different courses during a year. The largest groups of students come from the USA and Canada, Ukraine, Germany, Great Britain, France, Japan, Austria, Ireland, Italy, Spain and Australia.

### **SUMMER COURSES**

The summer program offers a wide range of possibilities. Students can attend the program in July or August and can register for courses ranging from 2 to 8 weeks in length. It is also possible to select courses of different levels of intensity ranging from 5 to 8 hours\* daily. All courses are available at different language levels. Apart from language classes, students have the option of attending lectures on Polish culture, literature, history, music, economy and important contemporary issues. These lectures are delivered in both Polish and English.

Students can take part in a variety of cultural and sightseeing activities including concerts, plays, trips around Lublin, day trips to picturesque locations in the Lublin region, a visit to Warsaw (the capital city of Poland), or to interesting places along Poland's eastern frontier. Students are also given a unique opportunity to meet with celebrities of Polish cultural and political life and see some of the masterpieces of Polish art and architecture.

Language classes are held in groups of no more than ten so as to afford students the best possible learning environment.

\* In the Polish educational system one academic hour equals 45 minutes.

# SCHOOL OF POLISH LANGUAGE AND CULTURE

## **COURSES FROM OCTOBER TO JUNE**

During the academic year the School offers a variety of Polish language programs which include an introduction to Polish culture.

## **SEMESTER-LONG COURSES**

Intensive study courses, available to students at all levels, are designed for those seeking to achieve fluency in Polish, versatile communication skills for professional or academic purposes as well as develop a thorough understanding of Polish language and culture. On completion of the course, participants should be able to master the Polish language sufficiently to begin university studies or work in Poland. The first semester begins in October and the second in the middle of February. The program provides for a continuity of study from the first to the second semester but it is also possible to start from scratch in the second semester. Language classes are held from

Monday to Friday (21 to 23 hours weekly, as well as 2 to 4 hours of lectures per week). In groups of no more than ten, students practise comprehension and enhance their oral and written expression. Lectures by academic specialists in Polish art, literature, history and social issues, as well as opportunities to participate in the cultural life of Lublin, enable students to gain an insight into Polish culture and traditions.

## **INDIVIDUAL COURSES**

At the special request of individuals, courses can also be provided on a one-to-one tutor-student basis, or for small groups. The time schedule and contents of such programs are arranged according to participants' availability, particular needs and preferences.

## **SPECIAL COURSES**

In co-operation with institutions engaged in the promotion of Polish language and culture, the

School conducts many programs adapted to the specific needs of particular groups. Such programs are ideal for those seeking to concentrate on such aspects as language, lectures in various academic fields, meetings with representatives of Polish political, economic and cultural life as well as sightseeing involving the presentation of Polish culture.

## **SCHOOL OF POLISH LANGUAGE AND CULTURE**

Al. Racławickie 14, 20-950 Lublin  
polski@kul.pl  
(+48) 81 445 41 11  
[www.kul.pl/school](http://www.kul.pl/school)



# ERASMUS+

## STUDENT MOBILITY FOR STUDIES AND TRAINEESHIPS

KUL students may undertake an Erasmus+ mobility activity for studies/traineeships abroad for a period not exceeding 12 months for each cycle of studies, regardless of the type of mobility (studies or traineeship), and the number of periods of mobility. Long-cycle Master's students (i.e. of Law, Psychology or Theology) may undertake a mobility activity for studies/traineeships abroad for a total period of 24 months during the whole cycle of studies.

### ERASMUS+: STUDENT MOBILITY FOR STUDIES

The Erasmus+ programme enables degree students of KUL to undertake a mobility activity for studies abroad. Courses attended at the partner university are treated as an integral part of the regular degree programme at KUL.

#### WHO CAN APPLY FOR THE GRANT?

To be eligible for the grant, the candidates need to comply with the following criteria:

- ➔ They must be registered students of KUL (of full-time or part-time programmes of the first, second or third cycle, or of the long-cycle Master's programmes);
- ➔ They must be students of at

least second year of the first-cycle programmes (when their stay abroad is about to start);

- ➔ Students of the final year of the first-cycle programmes can also benefit from the grant in the subsequent academic year, provided that they undertake second cycle studies at KUL;
- ➔ They must possess relevant foreign language skills;
- ➔ Their grade average from all the completed semesters of their current study cycle must be at least 3.5;
- ➔ They must apply for mobility at a university and degree programme, with which KUL has a valid relevant agreement within

the Erasmus+ programme (see the list of the partner universities at [www.kul.pl/Erasmus\\_outgoing\\_students](http://www.kul.pl/Erasmus_outgoing_students));

- ➔ They must not be beneficiaries of a Dean's leave or health leave during the mobility semester/year. To find out more about enrollment periods, application procedure, scholarship rates and the list of universities with which KUL has valid agreements concerning particular degree programmes, go to: [kul.pl/Erasmus\\_outgoing\\_students](http://kul.pl/Erasmus_outgoing_students) or visit the International Exchange Section (SOWM), GG-203 (Main Building, 2<sup>nd</sup> floor).



## ERASMUS+: STUDENT MOBILITY FOR TRAINEESHIPS

The Erasmus + programme offers students of KUL an opportunity to undertake a mobility activity for traineeships at a selected company or other relevant institution abroad. The traineeship must be related directly to the student's field of study and last between 3 to 6 months. The Erasmus+ traineeship can be part of the regular study programme (mandatory student practice), or it can offer a chance to develop extracurricular skills (voluntary practice). Students are expected to search for the institutions in which they would like to take their traineeship on their own.

### WHO CAN APPLY FOR THE GRANT?

To be eligible for the grant, the candidates need to comply with the following criteria:

- ➔ They must be registered students of KUL (of full-time or part-time programmes of the first, second or third cycle, or of the long-cycle Master's programmes);
- ➔ They must possess B1 foreign language skills (or higher if required by the receiving institution);
- ➔ Their grade average from all the completed semesters of their

current study cycle must be at least 3.5;

- ➔ They must not be beneficiaries of a Dean's leave or health leave during the mobility period;
- ➔ They must apply for a traineeship whose thematic (knowledge, training) domain is compatible with their field of study;
- ➔ Last year students (who do not plan to continue pursuing another degree programme) are eligible to apply for an Erasmus+ traineeship, which they may undertake as graduates within 12 months from graduation (in this case students must submit application documents until the day of the defence of their thesis).

### WHERE CAN YOU GO?

Institutions providing traineeships must be located in the territory of a state that formally participates in the Erasmus+ programme (27 EU countries plus EEA countries). The traineeship can be undertaken in the following institutions:

- ➔ foreign institutions such as business companies, museums, libraries, hospitals, etc.;
- ➔ research and development institutions;
- ➔ non-profit organizations;

- ➔ administrative units of foreign universities that are not involved directly in any educational activities (e.g. libraries, finance departments, dean's offices, university departments of international cooperation);
- ➔ foreign schools (primary, lower secondary, secondary) for students of education studies and related specializations;
- ➔ Polish institutions with headquarters located abroad, provided that the working language of the traineeship is not Polish.

### THE TRAINEESHIP CANNOT BE COMPLETED IN:

- ➔ any of the institutions of the European Union;
- ➔ any of the institutions, authorities or bodies in charge of any of the EU programmes.

To find out more about enrollment periods, application procedure and scholarship rates go to:

[kul.pl/Erasmus\\_outgoing\\_students](http://kul.pl/Erasmus_outgoing_students) or visit the International Exchange Section (SOWM), GG-203 (Main Building, 2nd floor).

## CHARITY WORKS, JOB CAREER

Studying is a time for learning, integration, gathering new experiences, but it is also an introduction to professional life. International students of KUL may seek for voluntary service, traineeships and job offers at the KUL Career Office. The KUL Career Office is a university unit which specialises in carrying out career aptitude assessment, counselling and organisation of events and meetings with employers. If you are looking for a job, voluntary service or traineeship opportunities, you may register on PORTAL of the KUL Career Office: [www.kul.pl/biurokarier](http://www.kul.pl/biurokarier) (please use an on-line translation facility for our Career or Employer's Portals).

**MAIN BUILDING, ROOM GG-131** (entrance next to the university chapel)

Al. Raławickie 14, 20-950 Lublin  
kariera@kul.pl  
(+48) 81 445 41 31

[www.kul.pl/biuro-karier-kul](http://www.kul.pl/biuro-karier-kul)



# PRACTICAL INFORMATION

## Accommodation options

### PRIVATE DORMITORIES

#### PRIVATE DORMITORY BURŻUJ

26 Langiewicza Str.  
biuro@burzujlublin.pl  
(+48) 607 278 753  
<http://burzujlublin.pl/> (contact form available)

#### PRIVATE DORMITORY DUET

13 Chodźki Str.  
(+ 48) 783 568 679  
duet@studentdepot.pl  
<https://studentdepot.pl/en/akademikduet-lublin>

#### PRIVATE DORMITORY CUBE STAY & STUDY

7 Mackiewiczza Str.  
(+48) 502 020 501  
e-mail: info@cube-study.pl  
<https://www.facebook.com/CubeStayAndStudy>

#### PRIVATE DORMITORY DOM STUDENTA TBV

72A Nadbystrzycka Str.  
(+48) 81 538 28 28  
e-mail: akademik@tbv.pl  
<http://www.akademiki.tbv.pl/dom-studencki-przy-ul-nabystrzyckiej/>

In order to book a room, you should contact the chosen dormitory as soon as possible by e-mail / phone.

In order to receive assistance in booking a room in university dormitories, students enrolled should contact the International Student Support Centre (ISSC).  
University dormitories

### UNIVERSITY DORMITORIES

- ➔ double or triple rooms
- ➔ Internet connection in the room available
- ➔ the code of conduct is rather strict (e.g. the entrance is closed at 11.00 p.m., no overnight visits are allowed)
- ➔ **PRICE:**
  - the female dormitory – PLN 390 – 490\* per month (in a double room)
  - the male dormitory – PLN 460 – 570\* per month (in a double room)

(\*Prices depend on the standard of rooms.)

- ➔ the number of places is limited
- ➔ in order to receive assistance in booking a room in university dormitories, students coming for the 1st semester or the whole academic year should contact the International Student Support Centre (ISSC).  
The female dormitory is located around 15 minutes by bus from the city centre, near the Faculty of Natural Sciences and Health and KUL's Sports Centre (Konstantynów St.).  
There are two male dormitories. One of them is located at

Niecała St., around 15 minutes on foot from the university main campus and the other is located around 15 minutes by bus from the city centre, near the Faculty of Natural Sciences and Health and KUL's Sports Centre.

### PRIVATE FLATS

There is also a possibility of renting a room or a flat in different parts of the city; the prices range from PLN 400 to PLN 1200 for a single room depending on the standard, location and distance from the university.

### SOME LINKS WITH ROOMS/FLATS FOR RENT:

<http://erasmusu.com/en/erasmus-lublin/room-for-rent-student>  
<https://rentberry.com/pl/apartments/s/lublin-poland>  
Facebook page: Apartments for rent - LUBLIN, POLAND  
[https://www.facebook.com/Apartments.for.rent.Lublin/about/?ref=page\\_internal](https://www.facebook.com/Apartments.for.rent.Lublin/about/?ref=page_internal)

### USEFUL TIPS:

- ➔ Arrive some time in advance in order to find a suitable place as there are more and more students every year in Lublin;
- ➔ If you need temporary accommodation, contact the International Student Support Centre (ISSC) and you will receive addresses of cheap hostels and hotels;
- ➔ Please remember to get to know all the conditions and fees;
- ➔ You are also responsible for keeping your place in order;
- ➔ If you want to organize a party, please keep in mind that your neighbours may not like it! In Poland there are quiet hours from 22:00 (10.00 p.m.) till 6:00 (6.00 a.m.) – no loud music or noises are allowed then;
- ➔ If you damage something, you will have to repair it or buy a new one;
- ➔ Our university will not bear any responsibility for any problems that may occur during your stay at a private dormitory / private flat;

# LEGALIZATION OF STAY IN POLAND

## RESIDENCE PERMIT REGULATIONS

### BEFORE ARRIVAL

Citizens of the European Union, Norway, Iceland, Liechtenstein, and Switzerland (referred to as EU or EFTA nationals below) and family members who are not EU nationals can stay in Poland for up to 3 months without any additional procedures. During that time, EU citizens are required to carry a valid travel document or a document confirming their identity and citizenship. Their family members who are not EU or EFTA citizens are required to carry a valid travel document.

Citizens of countries that are not EU or EFTA members are required to obtain a Polish visa at the Polish Consulate in their country.

### WHEN ENTERING POLAND, YOU SHOULD:

- ➔ state the goal and the circumstances of your planned stay and present documents confirming this information;
- ➔ carry and present, at the request of the Border Guard, documents confirming health insurance for the duration of your stay in Poland;
- ➔ (if entering on a visa) have sufficient funds to support yourself during your stay and return to your country of origin or present documents confirming your ability to legally obtain such funds.

### VISA

Visas are issued by consular officers. Visa applications must be submitted in consulates or the consular departments of Polish embassies in different countries. If your country does not maintain diplomatic relations with Poland, you must apply in another country's nearest consular post. Visa denial is final. Find the nearest consulate or embassy.

For detailed information about visa procedures and required documents, go to: [cudzoziemcy.lublin.uw.gov.pl/kontakt/](https://cudzoziemcy.lublin.uw.gov.pl/kontakt/)

### AFTER YOUR ARRIVAL

#### REGISTER YOUR ADDRESS OF RESIDENCE:

##### LUBLIN CITY OFFICE

Information Desk for Foreigners  
14 Wieniawska St.(1st floor)  
20-071 Lublin  
foreigners@lublin.eu  
(+48) 81 466 1009

#### TEMPORARY RESIDENCE PERMIT FOR THE PURPOSE OF STUDIES:

Citizens of non-EU/EEA countries must submit an application for a residence card no later than on the last day of their legal stay (BEFORE the expiration of their present visa/residence permit)

#### SCHEDULE AN APPOINTMENT FOR APPLICATION SUBMISSION:

Lublin Voivodeship Office  
Citizens' Affairs and Foreigners  
Department

#### SECRETARIAT

ul. Czechowska 15, 20-914 Lublin  
Enquiries are handled in Polish, however, the Office provides information in English:  
(+48) 81 742 45 59

#### DETAILED INFORMATION ABOUT LEGALISATION OF STAY IN POLAND BY A STUDENT:

<https://student.lublin.eu/for-a-student/legalizacja-pobytu/?lang=en>



# ARRIVAL IN LUBLIN

There are several options to travel to Lublin depending on the country where you come from.

## PLANE

If you decide to travel by plane, you should choose one of the following airports:

- Lublin Airport [www.airport.lublin.pl/en](http://www.airport.lublin.pl/en);
- Warsaw Chopin Airport ("Okęcie") [www.lotnisko-chopina.pl/en/index.html](http://www.lotnisko-chopina.pl/en/index.html);
- Warsaw Modlin [en.modlinairport.pl](http://en.modlinairport.pl);
- Rzeszów Jasionka [www.rzeszowairport.pl/en](http://www.rzeszowairport.pl/en);
- Kraków Balice [www.krakowairport.pl/en](http://www.krakowairport.pl/en);

In order to get to Lublin from one of these airports, you will have to take a bus or train.

## TRAIN

All trains coming to Lublin stop at the Lublin Main Railway Station (Lublin Główny). The Railway Station is located in Dworcowy Square (Plac Dworcowy) and you will have to take the bus (no. 13, 30) or a taxi to get to the city centre.

## OTHER RAILWAY STATIONS IN POLAND:

- Warsaw (WARSZAWA CENTRALNA)  
A journey from Warsaw to Lublin by train takes approx. 2,5 hours.
- Cracow (KRAKÓW GŁÓWNY)  
A journey from Cracow to Lublin by train takes approx. 4,5 hours.
- Rzeszów (RZESZÓW GŁÓWNY)  
A journey from Rzeszów to Lublin by train takes approx. 3 hours.  
For further information and timetables consult the website: [rozklad-pkp.pl/en](http://rozklad-pkp.pl/en)

## BUS

There is also a good network of buses from Warsaw, Rzeszów and Cracow to Lublin. Please consult the websites for further information:

- [en.e-podroznik.pl](http://en.e-podroznik.pl);
- [global.flixbus.com](http://global.flixbus.com);

There is a direct bus Lublin <-> Warsaw Chopin Airport ("Okęcie") operated by CONTBUS: [www.contbus.pl/](http://www.contbus.pl/)



## WEATHER

Poland has a moderate climate with chilly winters and pleasant, mild summers. July is the warmest month with average temperature 20°C. During the winter the average temperature is about -3°C. You should be prepared that winter in Poland can be really freezing, with temperatures occasionally dropping even to -20°C and a lot of snow.

MONTH:	Jan	Feb	Mar	Apr	May	Jun	Jul	Aug	Sep	Oct	Nov	Dec
AVERAGE TEMPERATURES IN °C:	-3°	1°	5°	11°	15°	18°	20°	19°	14°	10°	5°	1°

## BOARD

The canteen *Lanczomania* is situated in the Main Building of the university (GG) and offers lunches for about 30 PLN (soup and the main course). The cafeteria offers tasty and cheap typical Polish food such as *pierogi*, *kopytka*, *bigos*, *pyzy*, *naleśniki* and many others. There is also a *NOLogo Café* situated on the campus in GG. It offers different kinds of tea and coffee, sandwiches (you can choose from the variants on offer or compose your own), salads, muesli with yoghurt and cakes. There are also lots of bars and restaurants situated next to the main campus, such as *Plackarnia*, *La Casa* or *TU BURGER*.

# ARRIVAL IN LUBLIN

## LOCAL TRANSPORT

Lublin has a good network of buses and trolleybuses which connects the city centre (where the KUL's Main Campus is situated) with all parts of the city. Tickets are available at newsagents', in ticket machines at bus stops or on buses. As a student, you will have discounts for short-term and long-term tickets, providing you have a valid Student Identity Card (issued within the first few weeks of your stay at KUL). Keep in mind that if you don't have a validated ticket with a Student Identity Card, you will be punished with a fine. Before you get a Student Identity Card (Legitymacja studencka),



it is recommended to buy tickets without a discount.

If you are going to use public transportation quite often we advise you to download Lubika App (available in Google Play and App Store). Thanks to this application you can buy single tickets, but also monthly and quarterly ones.

You can pick up a taxi either from a taxi rank or by calling a taxi service, e.g. (+48) 81 444 44 44, (+48) 81 511 11 11, (+48) 81 744 22 22, (+48) 81 524 00 00, (+48) 81 533 33 33. Of course, tariffs vary but it can amount up to approx. PLN 20 ~ 50 within the city.

Companies such as **UBER**, **BOLT** and **FREE NOW** operate in Lublin. You need to download a mobile application from Google Play or App Store in order to be able to use their services.

### MORE INFORMATION:

<http://mpk.lublin.pl/en/>

<https://lublin.eu/en/travel-information/getting-around-the-city/>

## HEALTH AND INSURANCE



In Poland, you can be treated in the public health service (free of charge) or privately (then you must pay for healthcare services). If you want to use healthcare services for free, you must be insured in the National Health Fund (Narodowy Fundusz Zdrowia - NFZ).

### WHAT ARE THE RULES REGARDING HEALTH INSURANCE (FOR THE INSURED)?

In Poland, health insurance comes under the responsibility of the National Health Fund (NFZ). Health insurance covers health care services, such as: medical visits, treatments and hospital stays, reimbursement of prescriptions and certain medicines.

If a person (including a foreigner) is not insured with the National Health Fund, they can use healthcare, but only for a fee - buying an insurance policy from a private company, which pays for the healthcare. Depending on the type of insurance policy, you may be exempted from paying for services or may apply for reimbursement. In many private medical facilities, you can buy the so-called subscription, i.e., a specific amount is paid to the facility every month for which a package of specific medical services is provided. Detailed information is available from the individual private insurance companies.



# EUROPEAN HEALTH INSURANCE CARD

Students from EU/EEA staying in Poland temporarily are entitled to free health care on the basis of the European Health Insurance Card (EHIC) (<https://ec.europa.eu/social/main.jsp?catId=559>), if they have valid medical insurance from their home country's national insurance system. The EHIC gives you access to medically necessary, state-provided healthcare during a temporary stay in any of the 27 EU countries.

You obtain a card before the arrival in Poland by contacting your health insurance institution, which is responsible for assuming your healthcare costs.

## HOW TO OBTAIN EHIC?

<https://ec.europa.eu/social/main.jsp?catId=563&langId=en#nationalinfo>

Using the European Health Insurance Card, the student can benefit from basic free health services at health care providers who have concluded a relevant contract with the National Health Fund (NFZ Narodowy Fundusz Zdrowia). Students can also purchase

an additional private health insurance for a broader range of health services. Foreigners who have voluntary health insurance from the NFZ (National Health Fund) and pay monthly contribution to the NFZ are then entitled to health care services provided by medical facilities (clinics, hospitals) or doctors who have concluded contracts with the National Health Fund. Such persons are also entitled to obtain EHIC, which is useful when traveling to other EU countries.

## VOLUNTARY HEALTH INSURANCE:

[https://www.nfz-lublin.pl/voluntary\\_health\\_insurance](https://www.nfz-lublin.pl/voluntary_health_insurance)

## LUBLIN NATIONAL HEALTH FUND BRANCH:

16 Szkolna St.  
20-124 Lublin

## PSYCHOLOGICAL SUPPORT FOR STUDENTS:

e-mail: [wsparcie@kul.pl](mailto:wsparcie@kul.pl)  
tel. (+48) 81 445 40 80  
e-mail: <https://wsparcie.kul.pl/>



## COST OF LIVING

It is difficult to give a precise estimate of how much money you will need, partly because much depends on your own circumstances and lifestyle. Here, you have a list of approximate prices of some basic products:

- loaf of bread EUR 0,75
- milk EUR 0,60
- chocolate EUR 0,75
- a student meal EUR 3-4
- a cup of coffee EUR 1-2
- bus ticket EUR 0,5
- taxi around the city EUR 5
- accommodation EUR 90-200 (per month)

## BANKS AND MONEY

In order to open a bank account you will need a passport and a Student Identity Card. Most banks are open from approximately 9.00 a.m. to 5.00 p.m., Monday to Friday. You can change money in banks or exchange offices ("kantory"). Changing money in exchange offices might be more advantageous to you as all banks charge commission.

## MORE INFORMATION IS AVAILABLE HERE:

<https://lublin.eu/en/travel-information/cost-of-living-in-lublin/>

# CITY OF LUBLIN

## THE ACADEMIC LUBLIN

Thanks to its geographical location, Lublin has a long tradition of integrating cultural diversities. Today, Lublin is the largest and most important industrial, economic and scientific centre in Eastern Poland. It is a city of inspiration and new perspectives, also known as a leading academic centre. The large number of students in the population and the constantly growing tourist interest in the city have resulted in an extensive and diverse cultural and artistic calendar of Lublin-based events. National statistics prove Lublin to be a friendly and safe city, which is more and more often chosen for a place of academic studies by a growing number of young people from all over the world.



**FOR FURTHER INFORMATION ABOUT THE CITY OF LUBLIN GO TO:**  
[lublin.eu/en](http://lublin.eu/en)

# CITY SIGHTS

There are so many choices and interesting sights in Lublin that it would be difficult to recommend just a few. However, there are some places that are an absolute must for all visitors:



## OLD TOWN

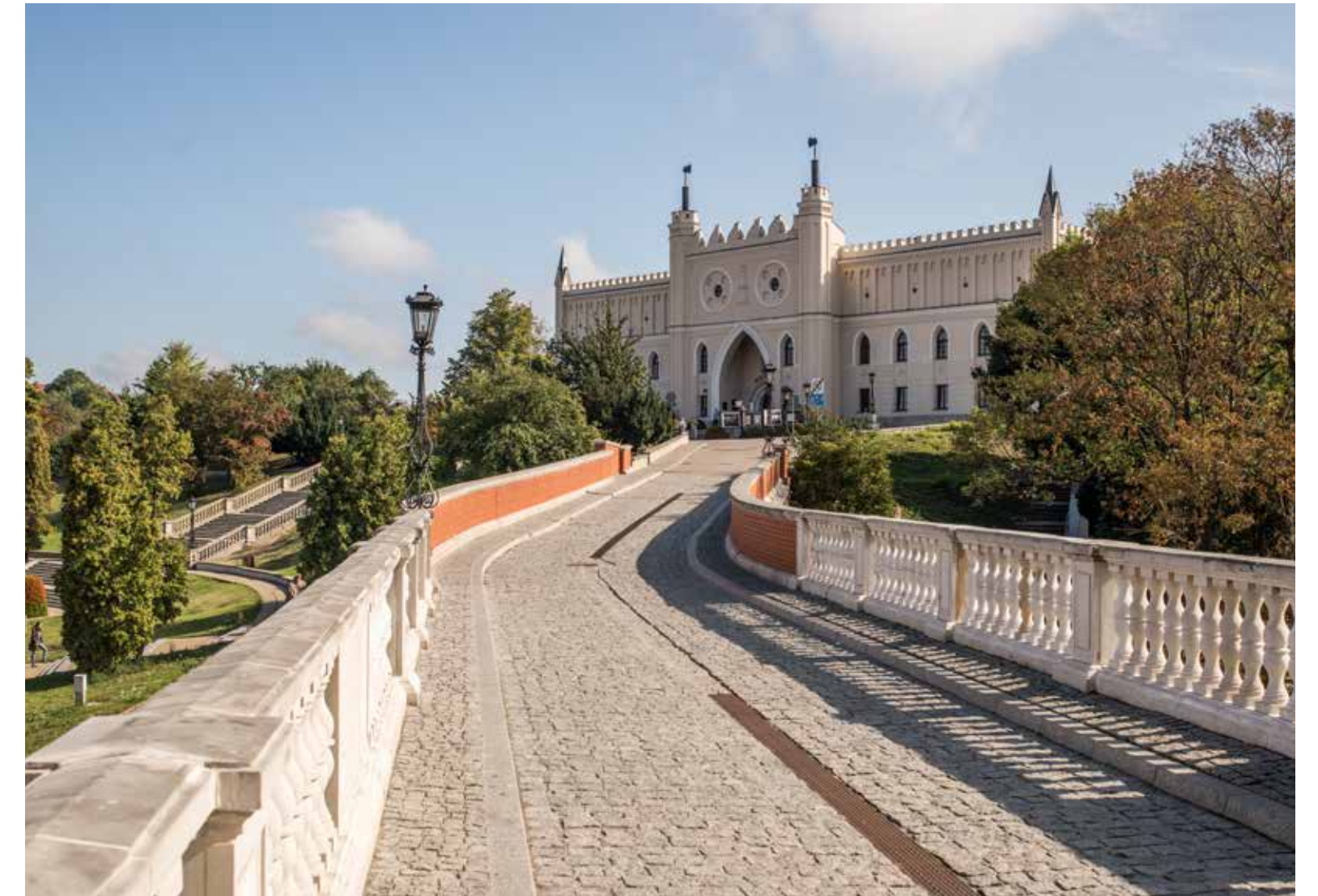
One of the most beautiful in Poland. Its uniqueness lies in its preservation of the original medieval town plan within the confines of its defensive walls. All the old townhouses are distinguished by rich artwork that still preserves its Gothic and Renaissance character. Apart from great sightseeing value, tourists are attracted by the abundance of stylish cafes, pubs and restaurants.

## THE CRACOW GATE

One of the most well-known landmarks of Lublin – it can be found in hundreds of photographs and drawings. Built in half of the 14th century in the Gothic style, it was rebuilt in the 16th century in Renaissance style with a baroque copula. Today, the Gate houses the Historical Museum of Lublin.

## THE CASTLE COMPLEX

One of the grandest sights in Lublin. The oldest parts of the castle date back to the middle of the 13th century. The castle served as a prison until 1954. During the Nazi occupation there were over 80,000 people interned here. Today, the castle houses the extensive National Museum in Lublin, with over 100,000 artefacts in various permanent exhibitions.





### THE HOLY TRINITY CHAPEL

A unique building in Poland and an exceptionally rare monument in Europe, famous for its unique Russo-Byzantine frescoes from the early 15th century combined with the Gothic style of the Chapel. It is the only example in Poland of this kind of art that has been preserved almost untouched.

### THE CATHEDRAL

The former Jesuit church dating from the end of the 16th century; it is particularly interesting because of its acoustic vestry as well as grand and stylish interior with baroque wall paintings.



### THE MUSEUM IN MAJDANEK

A preserved section of the infamous concentration camp organized by the Nazis in 1941-42. Majdanek was the second largest death camp (after Oświęcim-Brzezinka) in the countries of occupied Europe. It operated till liberation in July 1944, and during that period approximately 360,000 people, representing 51 nationalities from 26 countries, were exterminated. The permanent camp exposition consists of the postcamp objects: prison fields surrounded with the barbed wire, guard towers, prisoners` barracks, gas chambers and the crematorium with the tomb of those murdered in the camp. You can also see documentaries shown in a small cinema.



## GOING OUTSIDE LUBLIN

The city is also an excellent base if you want to travel further and visit other beautiful spots in the Lublin Region, including:

**KAZIMIERZ DOLNY** – an architectural and cultural pearl of the region

**KOZŁÓWKA** – with the beautiful Zamoyski Palace Complex housing, a unique gallery featuring socialist-realist “art”

**NAŁĘCZÓW** – a well-known, beautifully situated spa the 18th-century baroque-classicist Małachowski Palace

**ZAMOŚĆ** – its Old Town is included on the UNESCO World Heritage list.



# AFTER HOURS IN LUBLIN

## STUDENT CULTURAL DAYS

Each year in May, Student Governments from all Lublin universities in cooperation with other student organizations organize one of the most famous events in the Lublin Region - Student Cultural Days (Juwenalia). They last a few weeks and during that time the university and city venues are full of theatre performances, concerts, film marathons, panel discussions, dance performances, martial arts performances, etc.

## CULTURE

Lublin has a bewildering array of options as regards entertainment and cultural life. You can choose among theatres, cultural centres, philharmonic hall, musical theatres and many, many more. All the options and current cultural events can be found at <https://lublin.eu/en>, <http://www.spotkaniakultur.com/en> or <https://lublininfo.com/en/#glowna>.

## CINEMAS

Cinema City, Plaza Shopping Centre, Lipowa Street 13; Felicity Shopping Centre, Al. Wincentego Witosa 32, [https://www.cinema-city.pl/?lang=en\\_GB#/](https://www.cinema-city.pl/?lang=en_GB#/)

Multikino, Olimp Shopping Centre, Al. Spółdzielczości Pracy 34, <http://multikino.pl/pl/w-kinie>  
Bajka, Radziszewskiego Street 8, <https://kinobajka.nazwa.pl/>

## THEATRE AND PHILHARMONIC HALL

Juliusz Osterwa Theatre (Narutowicza Street 17, [www.teatrosterwy.pl/index.php](http://www.teatrosterwy.pl/index.php) - only in Polish), featuring a wide range of classical and modern plays  
Teatr Stary w Lublinie at Jeżuicka Street 18 (<https://www.teatrstary.eu>)  
Filharmonia Lubelska (Lublin Philharmonic Hall) at Skłodowska Street 5 (<http://filharmonialubelska.pl> - only in Polish)

## PUBS, CLUBS, DISCOS

We recommend taking a walk around the city centre and the Old Town because each cafeteria, pub, club or disco has its own, particular flavour and offer.



## MAIN CULTURAL EVENTS IN LUBLIN

Night of Culture (June)  
East of Culture - Different Sounds  
Art'n'Music Festival (June)  
Carnaval Sztukmistrzów (July)  
Re: Tradycja (August)  
European Festival of Taste (September)  
Theatre Confrontations (October)  
International Dance Theatres Festival (November)  
Lublin Film Festival (November)  
Christmas Festival (December)

For more information go to: <https://lublin.eu/en/what-to-see-do/events-festivals/>

# SPORT ACTIVITIES

KUL has a very modern and well-equipped sports centre. Students of KUL can participate in various sport sections: team sports (basketball, volleyball, handball, etc.), badminton, rowing, aerobics, tennis, swimming, gym, athletics, climbing, chess, judo, karate and others.

If you want to participate in one of these sport sections, you should go directly to the coach. There are also regular physical education classes in your degree programme.



**KUL SPORTS CENTRE**, Konstantynów Street 1.  
<https://www.kul.pl/o-nas,11421.html>

## OTHER SPORTS CENTRES (GYMS, FITNESS CLUBS, SWIMMING POOLS) IN LUBLIN:

### STREFA FITNESS& WELLNESS

E. Leclerc Shopping Centre  
19 Tomasz Zana Street  
<https://www.klubstrefa.pl/>

### CITY FIT

Plaza Shopping Centre  
15 Lipowa Street  
<https://cityfit.pl/aktualnosci/lublin-plaza/>

### AQUA LUBLIN

Al. Zygmunta 4  
<http://www.mosir.lublin.pl/obiekty/aqua-lublin>

### AKADEMOS

1A Symfoniczna Street  
<https://akademos.pl/>

### CITY FIT

Several locations  
<http://cityfit.pl/en/klub/lublin/>

### STREFA WYSOKICH LOTÓW (TRAMPOLINES)

11 Cisowa Street  
<https://strefawysokichlotow.pl/lublin/>

## USEFUL LINKS AND ADDRESSES:

Lublin official website  
[lublin.eu/en/lublin/news/](http://lublin.eu/en/lublin/news/)

Cultural events in Lublin  
[lublin.eu/en/what-to-see-do/attractions-sights/monuments/](http://lublin.eu/en/what-to-see-do/attractions-sights/monuments/)

Lublin City Office – Information  
Desk for Foreigners  
[lublin.eu/en/urzad-miasta/](http://lublin.eu/en/urzad-miasta/)

Lublin Tourist Information Centre  
[www.lublintravel.pl/index.php?lang=en](http://www.lublintravel.pl/index.php?lang=en)

Lublin – Events & Festivals  
[lublin.eu/en/what-to-see-do/events-festivals/](http://lublin.eu/en/what-to-see-do/events-festivals/)

Multimedia - movies, photos  
[www.lublin.eu/kultura/multimedia/galerie/](http://www.lublin.eu/kultura/multimedia/galerie/)

Lublin live  
[www.lublin.eu/lublin/o-miescie/lublin-na-zywo/](http://www.lublin.eu/lublin/o-miescie/lublin-na-zywo/)

Discover Lublin  
[lublin.eu/en/lublin/about-the-city/](http://lublin.eu/en/lublin/about-the-city/)

Lublin TripAdvisor  
[www.tripadvisor.co.uk/Tourism-g274818-Lublin\\_Lublin\\_Province\\_Eastern\\_Poland-Vacations.html](http://www.tripadvisor.co.uk/Tourism-g274818-Lublin_Lublin_Province_Eastern_Poland-Vacations.html)

Study in Lublin  
<http://study.lublin.eu/en/>

### PSYCHOLOGICAL SUPPORT FOR KUL STUDENTS:

e-mail: [wsparcie@kul.pl](mailto:wsparcie@kul.pl)  
(+48) 81 445 40 80  
e-mail: [wsparcie.kul.pl](mailto:wsparcie.kul.pl)

# USEFUL POLISH WORDS & PHRASES

## GREETINGS

Hi – Cześć  
Good morning – Dzień dobry  
Good evening – Dobry wieczór  
Goodnight – Dobranoc  
Bye – Cześć  
What's up? – Co słyhać?  
Everything's fine – Wszystko dobrze

## BASIC POLITE PHRASES

Please – Proszę  
Thank you – Dziękuję  
I'm sorry – Przepraszam  
Excuse me – Przepraszam

## CONVERSATIONAL

Yes – Tak  
No – Nie  
My name is '...' – Mam na imię '...'  
Nice to meet you – Miło Cię poznać  
I don't speak Polish – Nie mówię po polsku  
Do you speak English? – Czy mówią Pan/Pani po angielsku?

I don't understand – Nie rozumiem  
English language – Język angielski  
Please write it down – Proszę to napisać  
Help me! – Ratunku!

## STUDIES

I study... – Studiuje ...  
Do you study...? – Czy studiujesz...?  
Do you have classes on ...? – Czy masz zajęcia w ...?

## DAYS OF THE WEEK

Monday – Poniedziałek  
Tuesday – Wtorek  
Wednesday – Środa  
Thursday – Czwartek  
Friday – Piątek  
Saturday – Sobota  
Sunday – Niedziela

## ACCOMMODATION

Single room – Pokój jednoosobowy  
Double room – Dwuosobowy  
Bathroom – Łazienka

Check-in / checkout – Zameldowanie / wymeldowanie  
Reception – Recepcja

## SHOPPING

Price – Cena  
How much for this? – Ile to kosztuje?  
Can I pay by credit card? – Czy mogę zapłacić kartą?

## TRANSPORT & GETTING AROUND

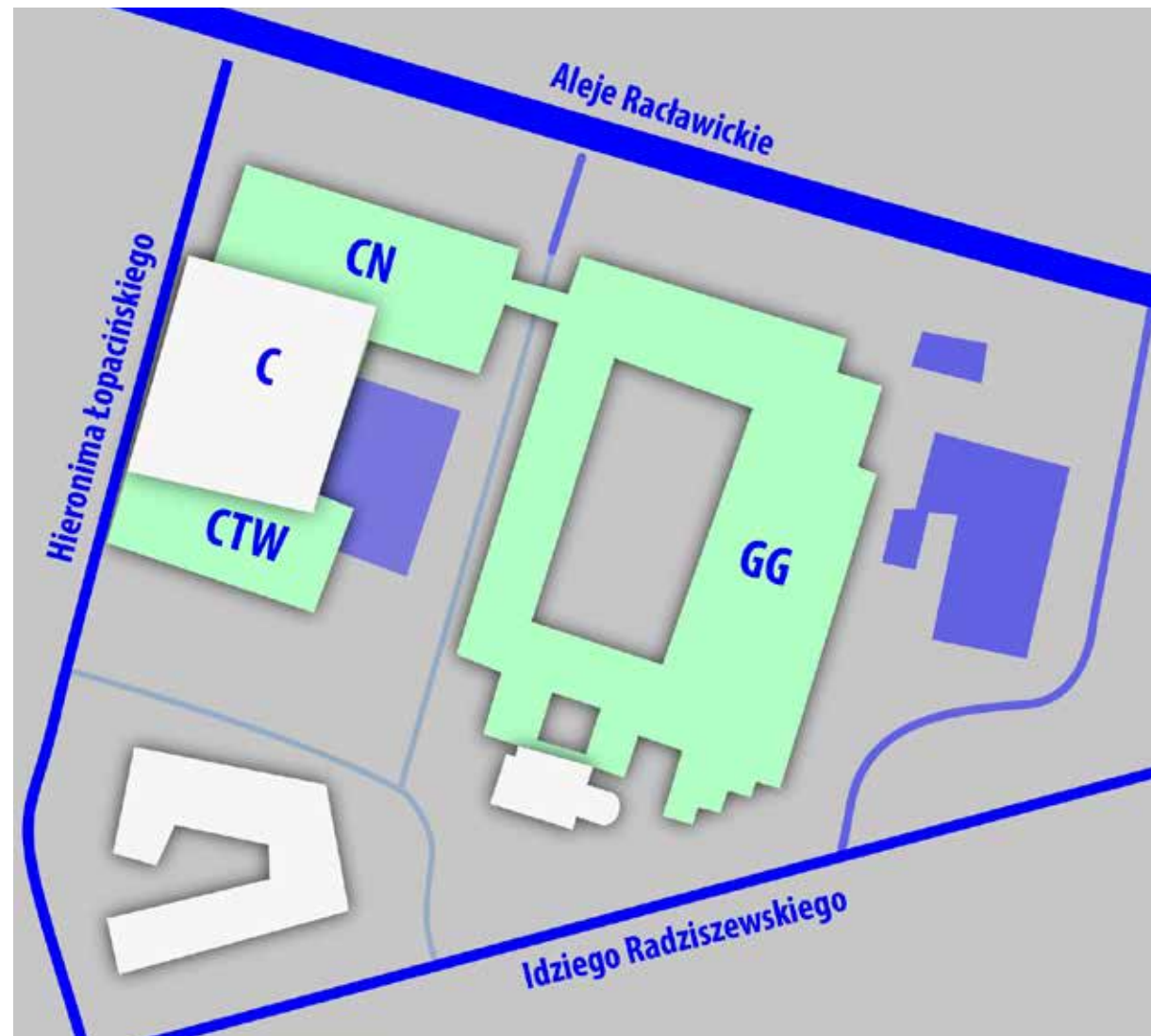
Airport – Lotnisko  
Flight – Lot  
Train – Pociąg  
Train station – Dworzec kolejowy  
Bus – Autobus  
Bus station – Dworzec autobusowy  
Ticket office – Kasa biletowa  
One ticket to (Warsaw) – Bilet do (Warsaw)  
Return ticket – Bilet powrotny

## DIRECTIONS

How can I get to... – Jak mogę dojechać do...  
Street – Ulica  
Square – Plac  
Right – Prawo  
Left – Lewo

## FOOD, DRINK & GOING OUT

Restaurant – Restauracja  
Waiter – Kelner  
Waitress – Kelnerka  
Dinner – Obiad  
Menu – Menu  
Wine – Wino  
Vegetarian – Wegetariański  
Vegan – Wegański  
Gluten-free - Bezglutenowy  
Where are the toilets? – Gdzie jest toaleta?  
One ... please – Jedno ..... proszę  
Cheers! – Na zdrowie!  
Can I have the bill, please? – Proszę o rachunek



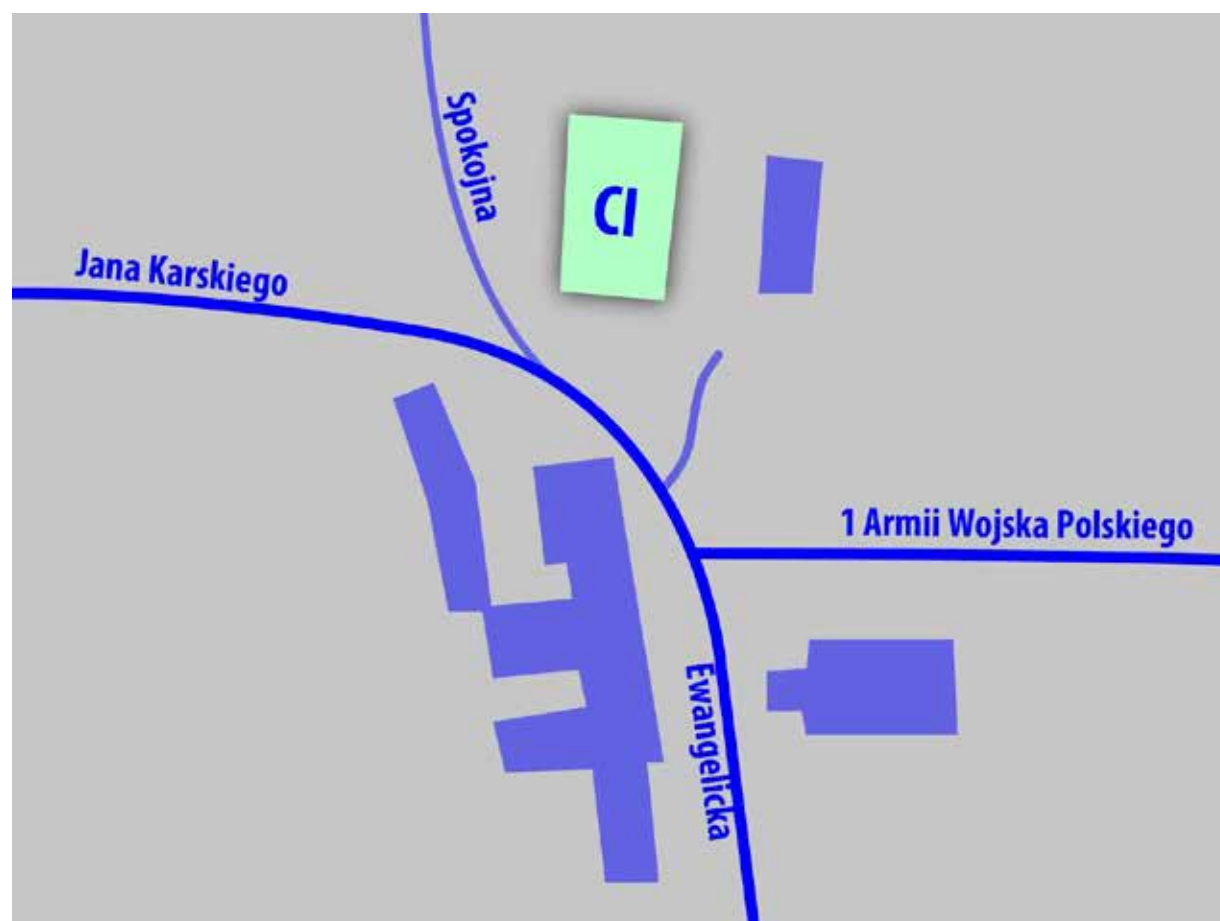
KAMPUS GŁÓWNY



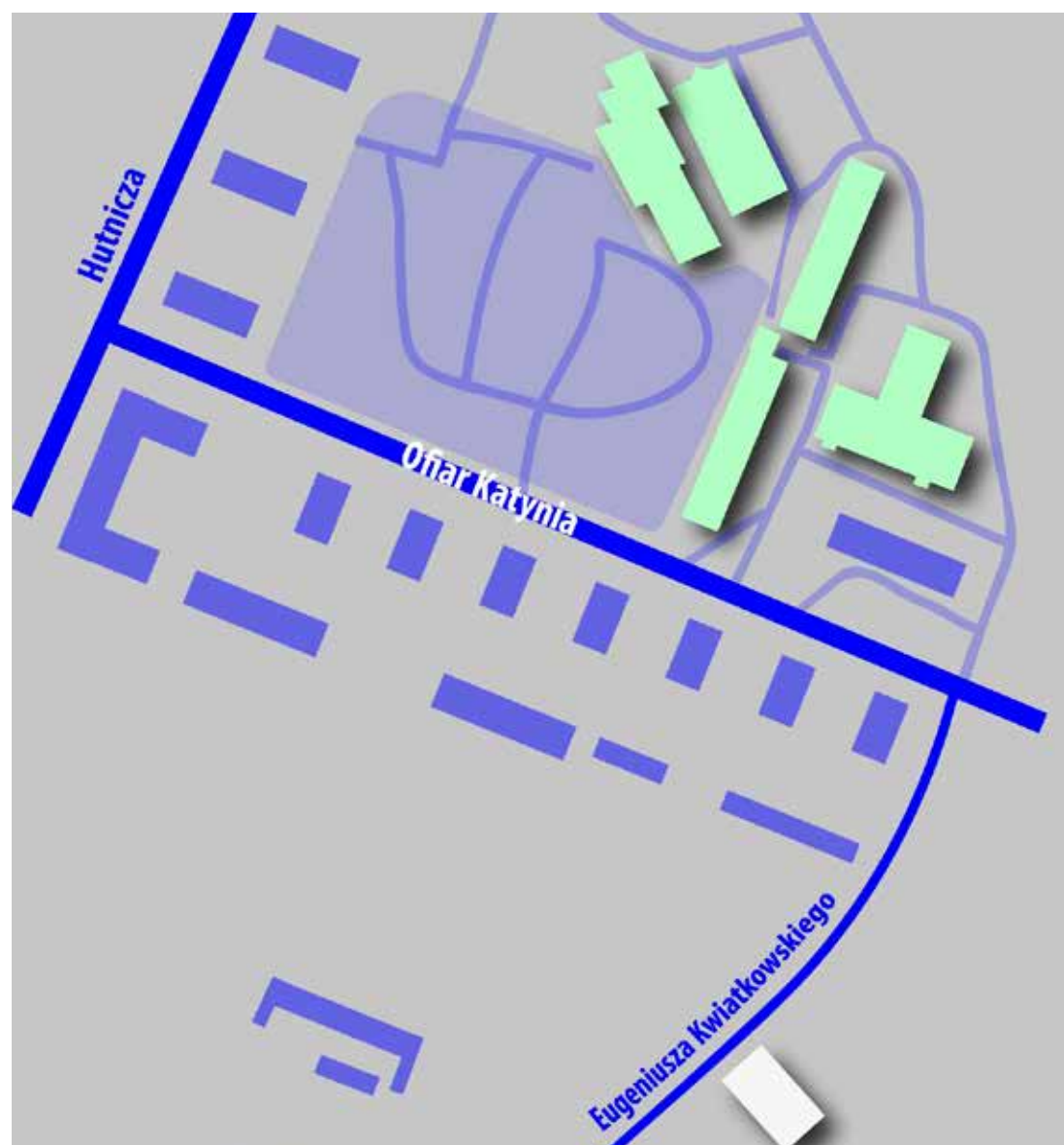
POCZEKAJKA



BIBLIOTEKA UNIWERSYTECKA



COLLEGIUM IURIDICUM



STALOWA WOLA





Rzeczpospolita  
Polska



Unia Europejska  
Europejski Fundusz Społeczny



Projekt „**WSPARCIE POTENCJAŁU KUL W ZAKRESIE OBSŁUGI STUDENTÓW  
I KADRY ZAGRANICZNEJ**” jest współfinansowany ze środków Europejskiego Funduszu  
Społecznego w ramach Programu Operacyjnego Wiedza Edukacja Rozwój.

---